

**Niagara Falls Observation Tower
Niagara Falls, New York**

**PROJECT DESCRIPTION: Tower Steel/Glass Replacement, Blasting &
Painting of The Tower & Cantilever Bridge**



Scaffold Tower w/ Containment & Cable Supported/Metal Deck Platform



Scaffold Tower w/ Containment & Cable Supported/Metal Deck Platform



Scaffold Tower w/ Containment



**Scaffold Tower w/ Containment (Left) &
Cable Supported/Metal Deck Platform (Right)**



**Scaffold Tower w/ Containment
Niagara Falls Foreground**



**Scaffold Tower w/ Containment
Niagara Falls Background**



Telescoping Leg Drilling Platform For The Installation Of Rock Anchors In The Vertical Rock Face Of The Niagara River Gorge



Telescoping Leg Drilling Platform For The Installation Of Rock Anchors In The Vertical Rock Face Of The Niagara River Gorge



Telescoping Leg Drilling Platform For The Installation Of Rock Anchors In The Vertical Rock Face Of The Niagara River Gorge



Drill Rig Ready For Placement On The Telescoping Leg Drilling Platform For The Installation Of Rock Anchors In The Vertical Rock Face Of The Niagara River Gorge



Telescoping Leg Drilling Platform For The Installation Of Rock Anchors In The Vertical Rock Face Of The Niagara River Gorge



Structural Steel Tower Leg Base Corner Support



Structural Steel Tower Leg Base Supports



Beginning Of Scaffold Tower Installation



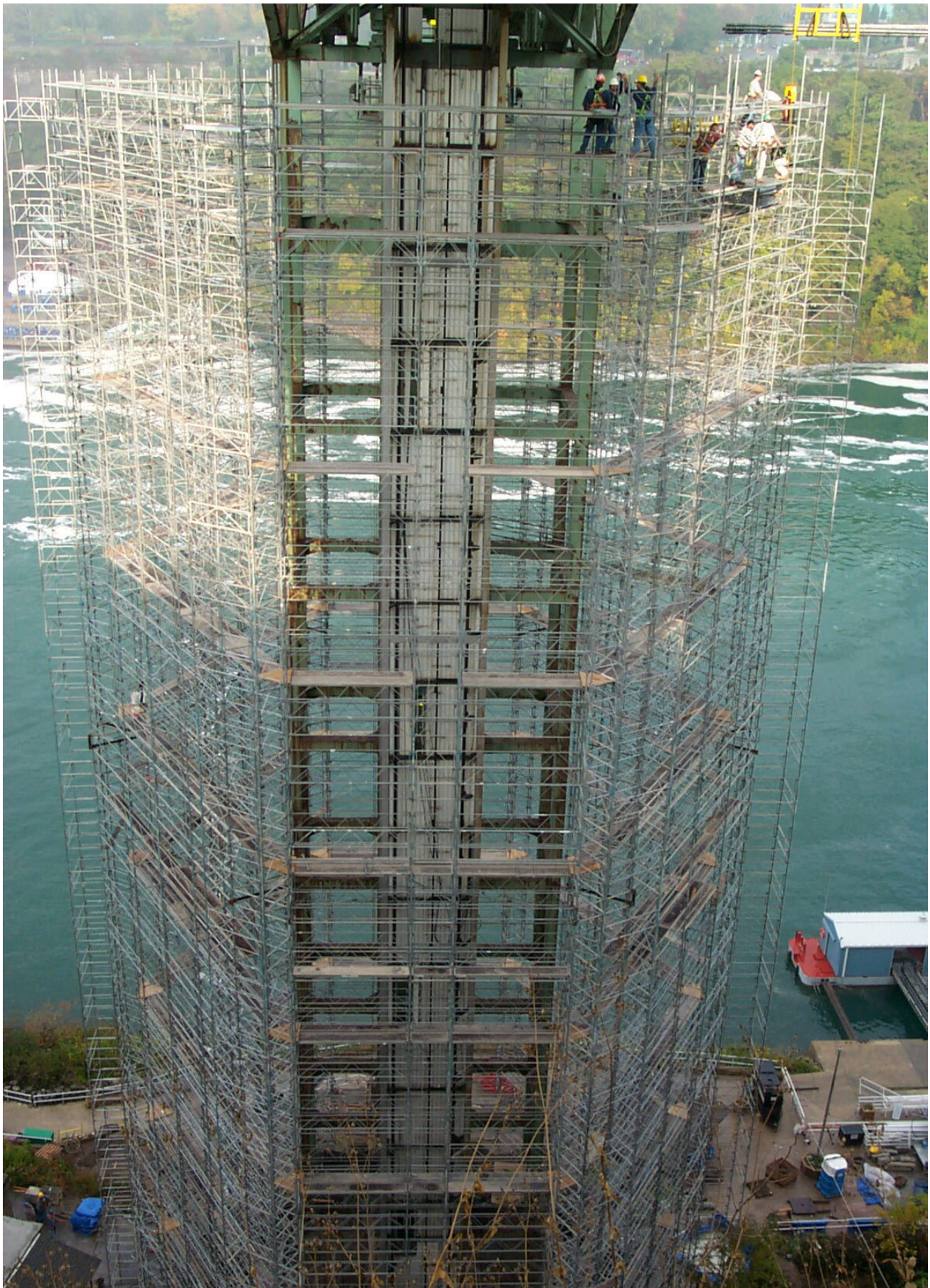
Scaffold Tower Installation



Scaffold Tower Installation



Scaffold Tower Installation



Scaffold Tower Installation



Scaffold Tower Installation

**Post Bracket/Horizontal Support Beam Assembly End Connection
For Cable Supported/Metal Deck Platform System**



End Connection At Cantilever Bridge



Main Cable Truss Support Assemblies Being Positioned In Place



Main Cable Truss Support Assemblies Being Positioned In Place



Main Cable Truss Support Assemblies In Place



Completed Project